

Lintel Desk in Concrete

With a strikingly minimal form to reflect the architectural quality of the material, the **Lintel** modular reception desk exemplifies the linear rigour of the Concrete range. A truly modular solution for public and reception spaces, **Lintel**'s look is defined by clean lines and right angles.

Key features

Easy to specify modular components

Three height options of 30", 37.5" and 43.5" as standard

Recessed branding, LED skirting, sign-in platform and storage units available as options

Reception desks can be handed to the left or right

CAD and BIM files available

DDA modules available

Cable management included as standard

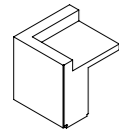
Made in lightweight, stain-resistant concrete

Choose light, mid or dark concrete with a smooth or raw finish

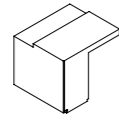
Available in 10-12 weeks (UK), 14-16 weeks (US)



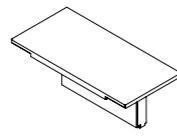
Lintel Desk in Concrete Modules



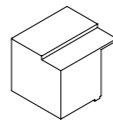
LD01
Left End
W31.5
D34.5
H30/37.5/43.5"



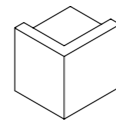
LD02
Left DDA
W31.5
D34.5
H30"



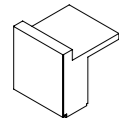
LD03
Straight DDA
W48
D34.5
H30"



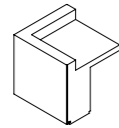
LD04
Right DDA
W31.5
D34.5
H30"



LD05
Right End
W31.5
D34.5
H30/37.5/43.5"



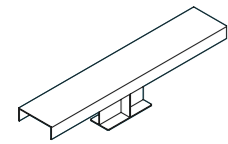
LD06
Straight
W31.5
D34.5
H30/37.5/43.5"



LD07
Angle 90
W34.5
D34.5
H30/37.5/43.5"

Dimensions relate to the footprint of the product at:
30" height = no upstand
37.5" height = 7.5" upstand
43.5" height = 13.5" upstand

Accessories



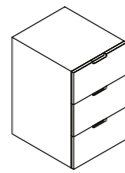
SP
Sign-in platform
Hot rolled steel
W63
D12
H13.75"



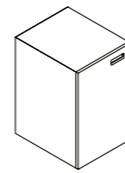
RB
Recessed branding
27.5
H8"
(recommended dimensions)



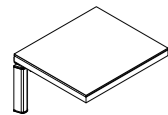
LS
LED skirting



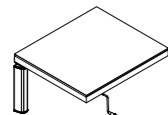
DU
Drawer unit
W15.75
D10/20.5
H27.5"



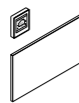
CU
Cupboard unit
W15.75
D10/20.5
H27.5"



Electric sit-stand desk
H25.5-37.5
D23.5-118"



Manual sit-stand desk
H25.5-37.5
D23.5-118"



Infrared heating panel

Illustrations above relate to the product at 37.5" height.



Lintel Desk in Concrete Configurations



Configuration 1

W63
D34.5
H30/37.5/43.5"



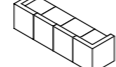
Configuration 2

W94.5
D34.5
H30/37.5/43.5"



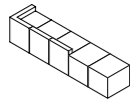
Configuration 3

W126
D34.5
H30/37.5/43.5"



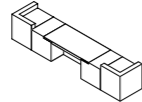
Configuration 4

W157.5
D34.5
H30/37.5/43.5"



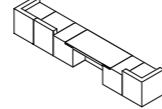
Configuration 5

W174
D34.5
H30/37.5/43.5"



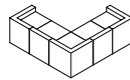
Configuration 6

W205.5
D34.5
H30/37.5/43.5"



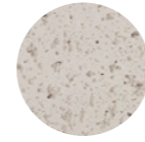
Configuration 7

W97.5/97.5
D34.5
H30/37.5/43.5"

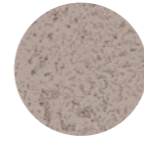


Lintel Palette Curation

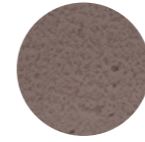
Concrete Colour Palette



Light Grey
C001



Mid Grey
C002



Dark Grey
C003

Illustrations above relate to the product at 37.5" height.

Alternative colours are available on request. For a full list of colour options please download our colour chart. The printed representation of colours may vary from actual samples. Always request actual samples before ordering.